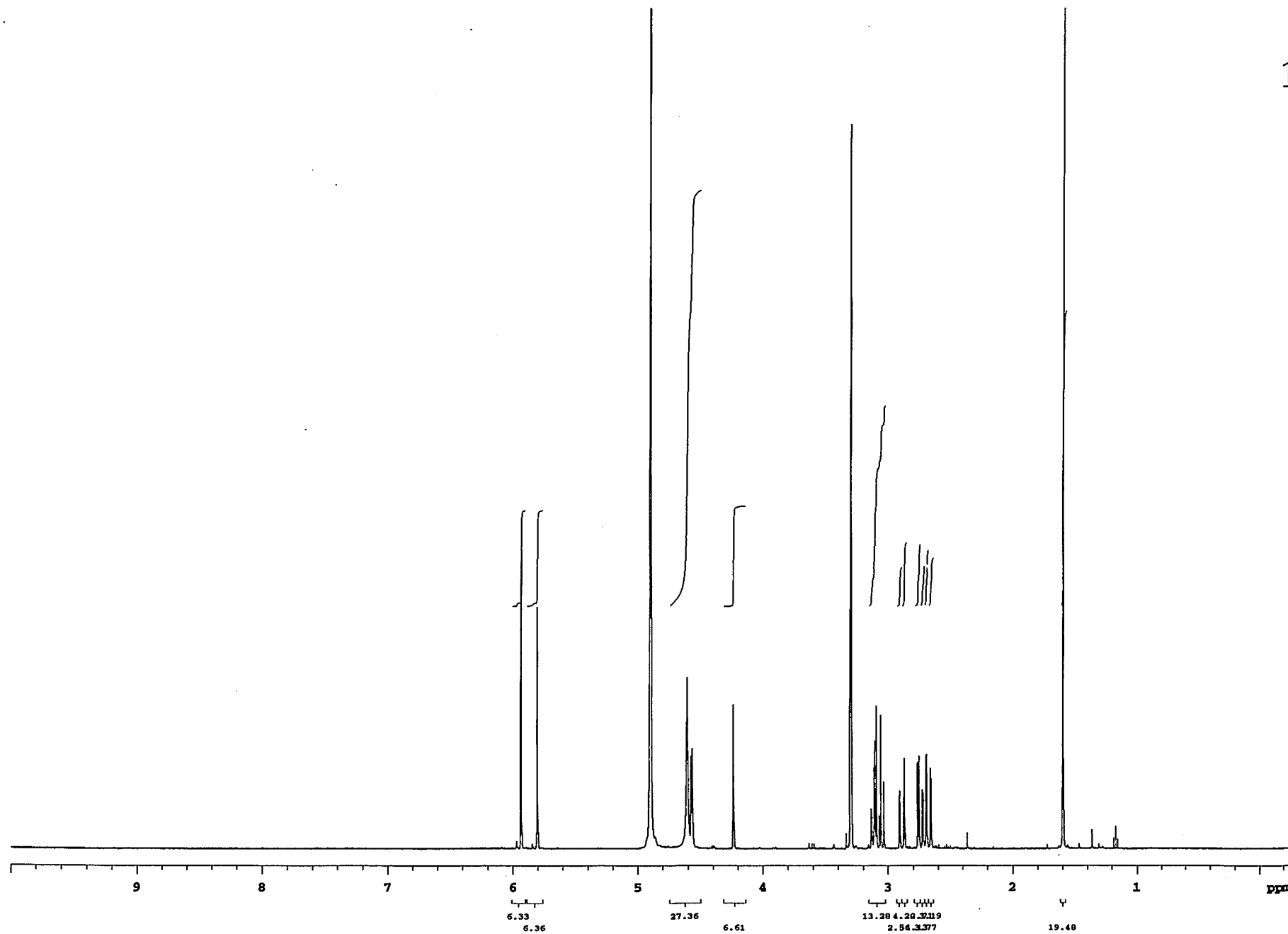


New phenolic compounds from *Camellia sinensis* L. fermented leaves. : Spectral data of teasperol

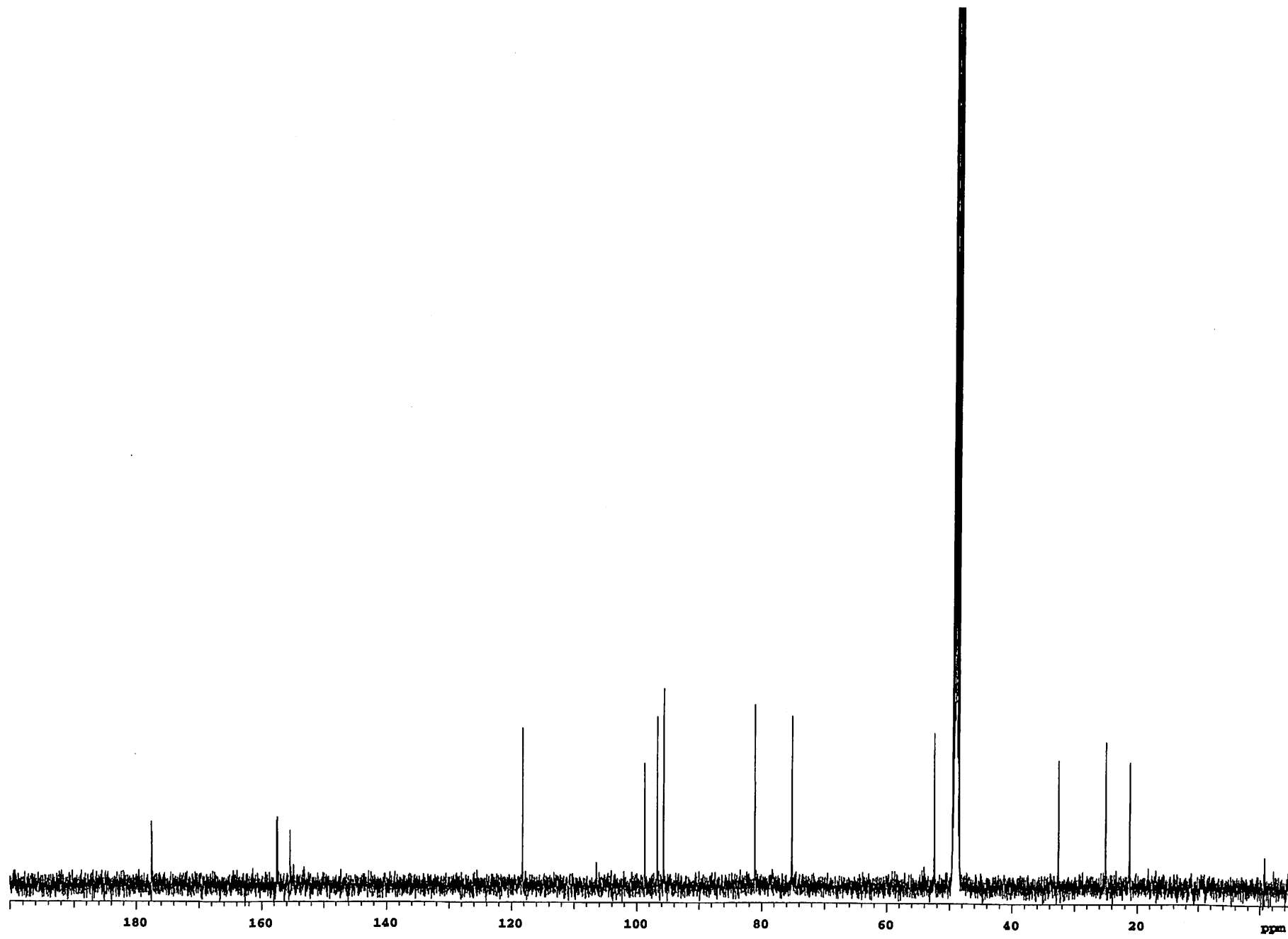
Kanegae A., A. Sakamoto, H. Nakayama, Y. Nakazono, I. Yakashiro, Y. Matsuo, T. Tanaka, K. Ishimaru,

2012.8.19

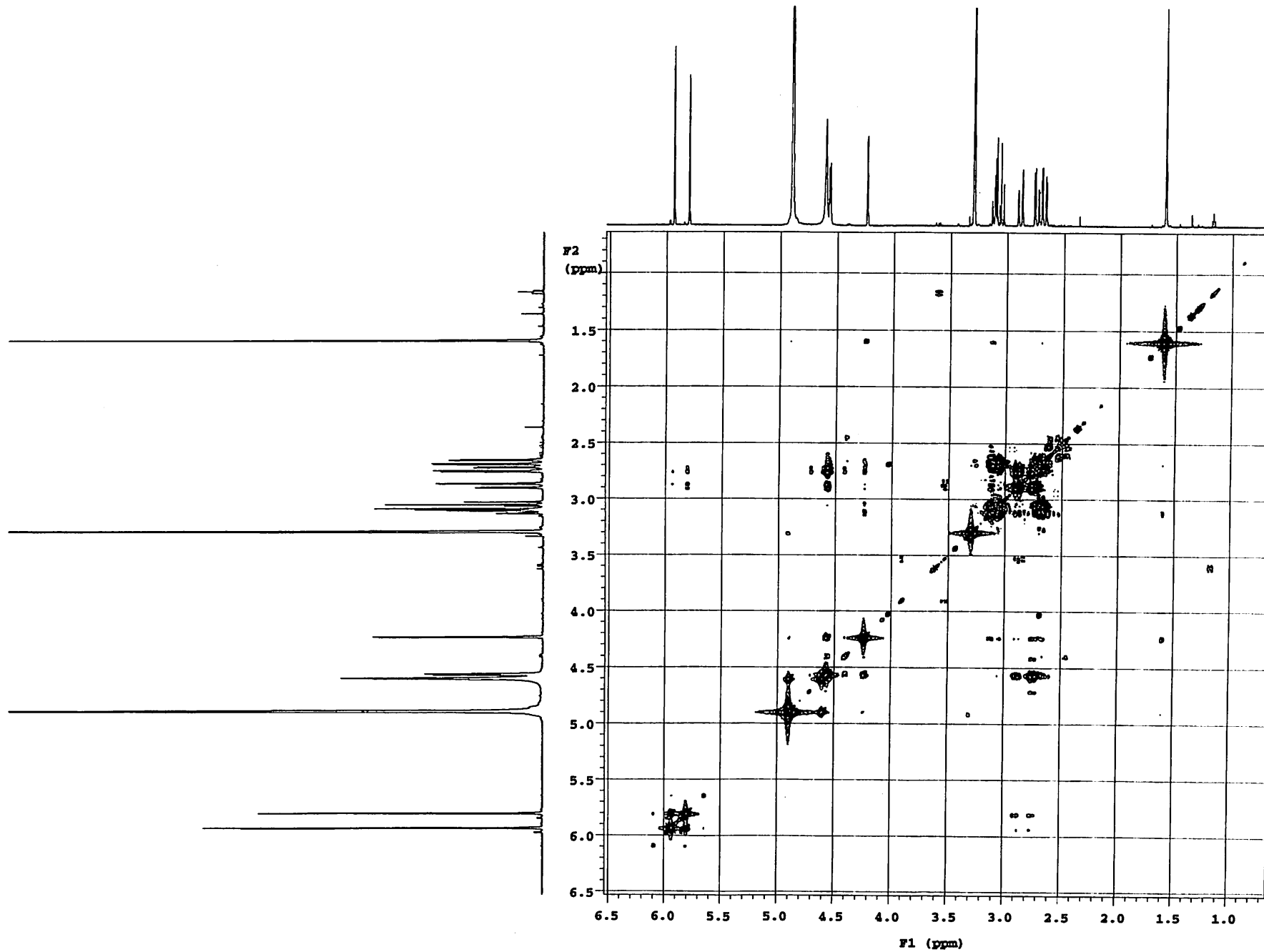
1H-NMR



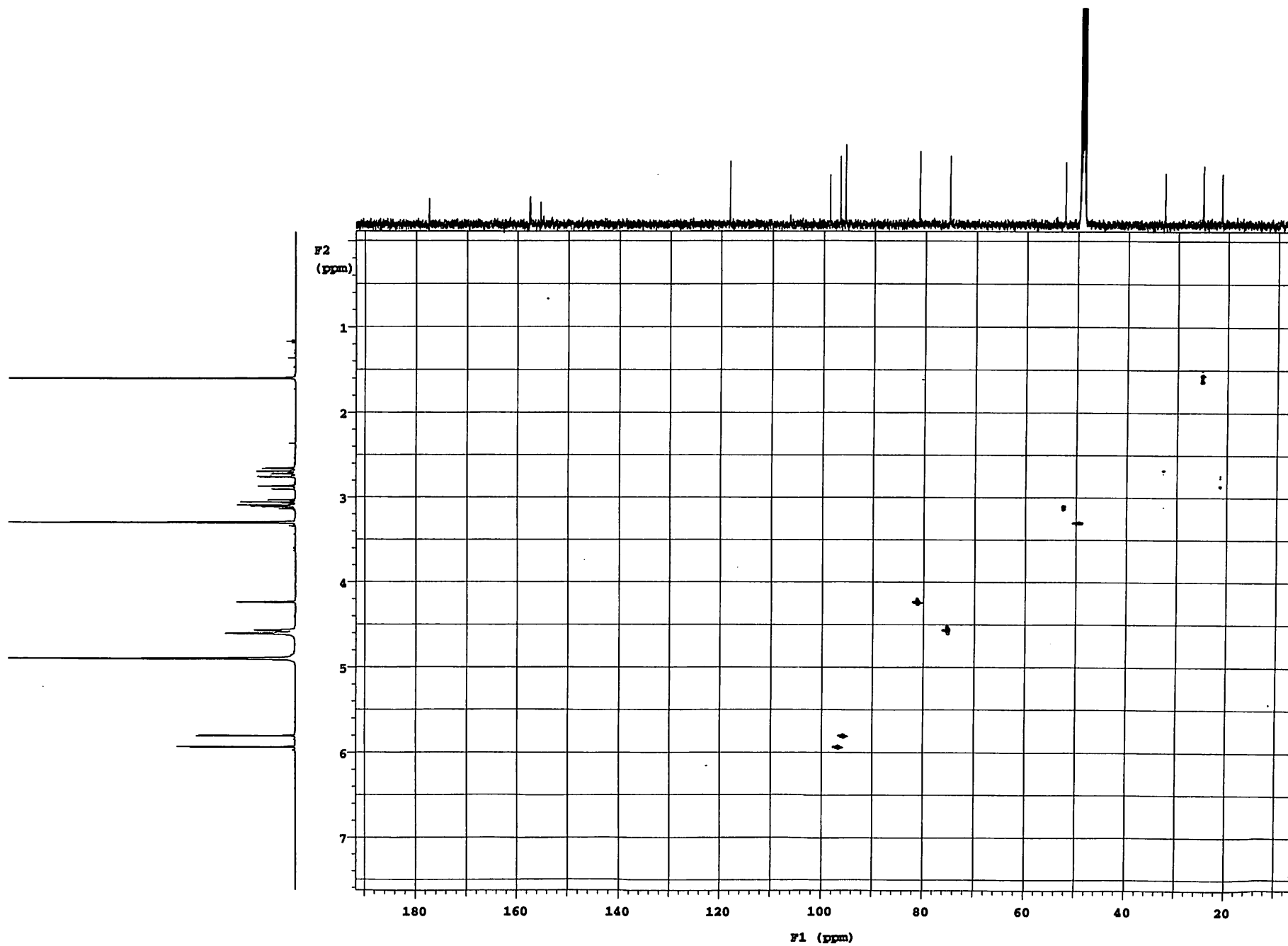
13C-NMR



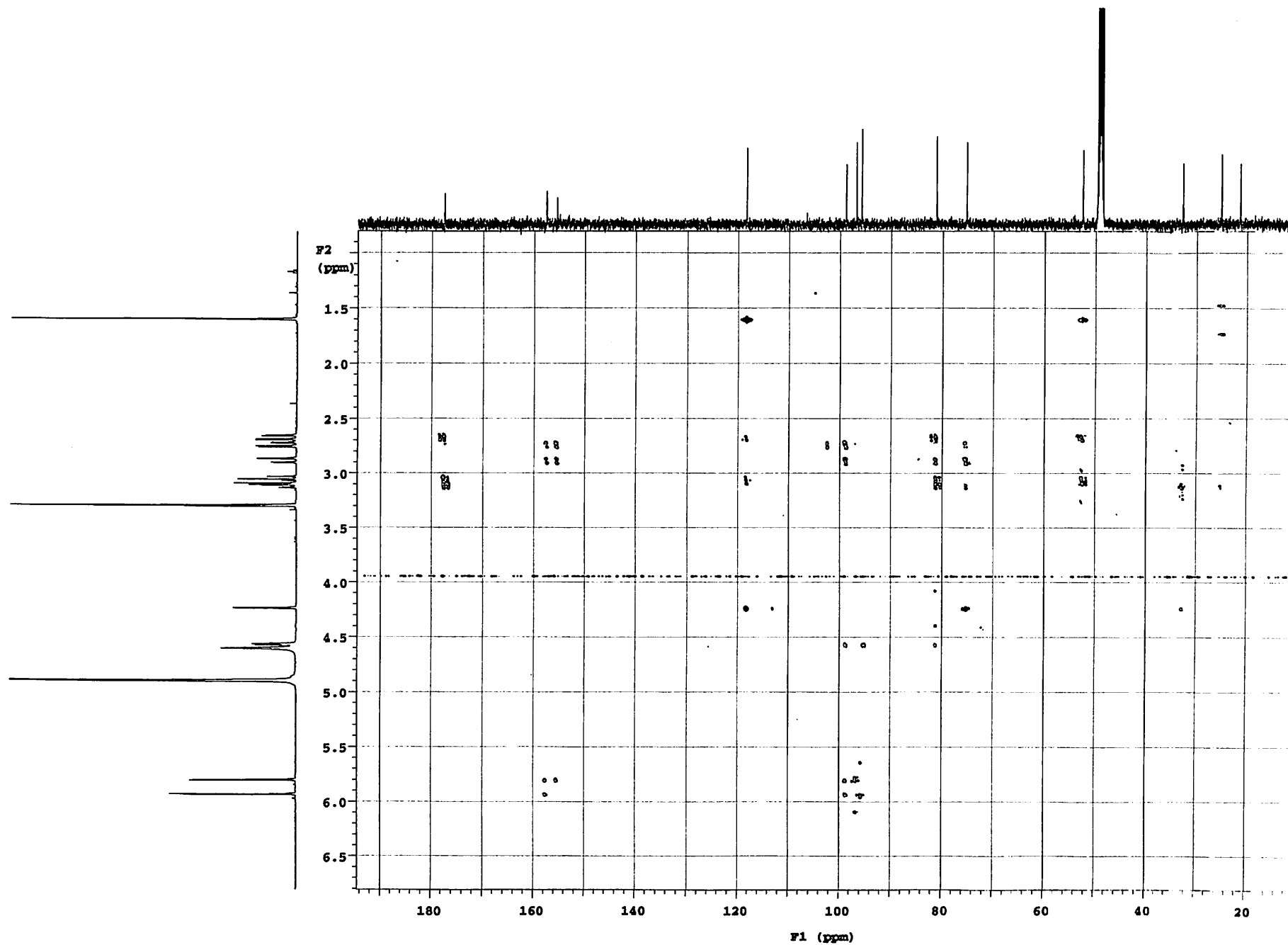
COSY



HSQC



HMBC



NOESY

